

LUXFORM[®] LIGHTING

Your garden lighting specialist



Safe, easy 
SOLAR

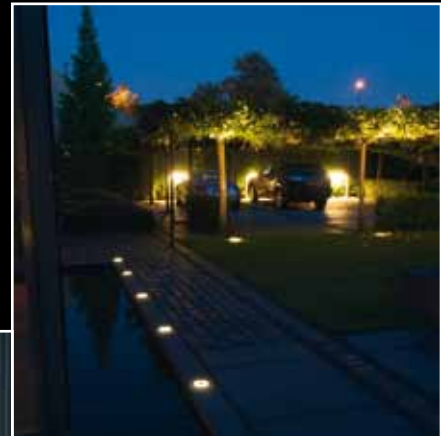
12 VOLT
 **EASY
CONNECT**

ECO 12V
POWER
Energy saving



Contents Page

Why? Garden Lighting	3
12 Volt Easy Connect	4 - 5 - 6
240 volt range	7 - 8 - 9
LED Lighting	10 - 11
Solar Lighting	12 - 13 - 14
A completely illuminated garden	15 - 16 - 17
Frequently Asked Questions – Low Voltage	18
Frequently Asked Questions – Solar	19





You can create an evening paradise with Luxform garden lighting.

Garden Lighting



Watch the seasons change.

Illuminate statues, water features and specimen plants with spotlights.

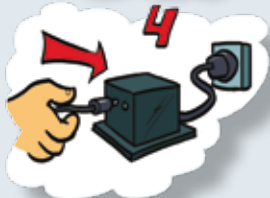
Add a little drama by using uplighters.

Mark paths, decks, drives and borders with post lights or LED's.



12 Volt EasyConnect





Luxform lighting works on 12 volts and is therefore completely safe to work with. The low voltage makes the system absolutely safe for children and inquisitive animals.

The cables can be placed directly underneath the surface. Deep digging is not necessary and you do not need any tools for the installation whatsoever.



12 VOLT

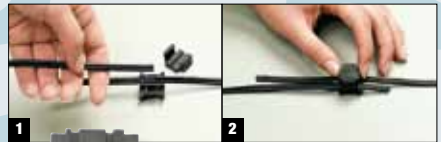
EASY
CONNECT



The integrated easy and safe 'Easy Connect' connection system, makes the installation of garden lighting child's play.

Push the two cables in the bottom of the cable connector, click the upper side of the connector on the bottom and you have made the connection! With this simple connection method, you can easily move the lights.

It is as flexible as that.

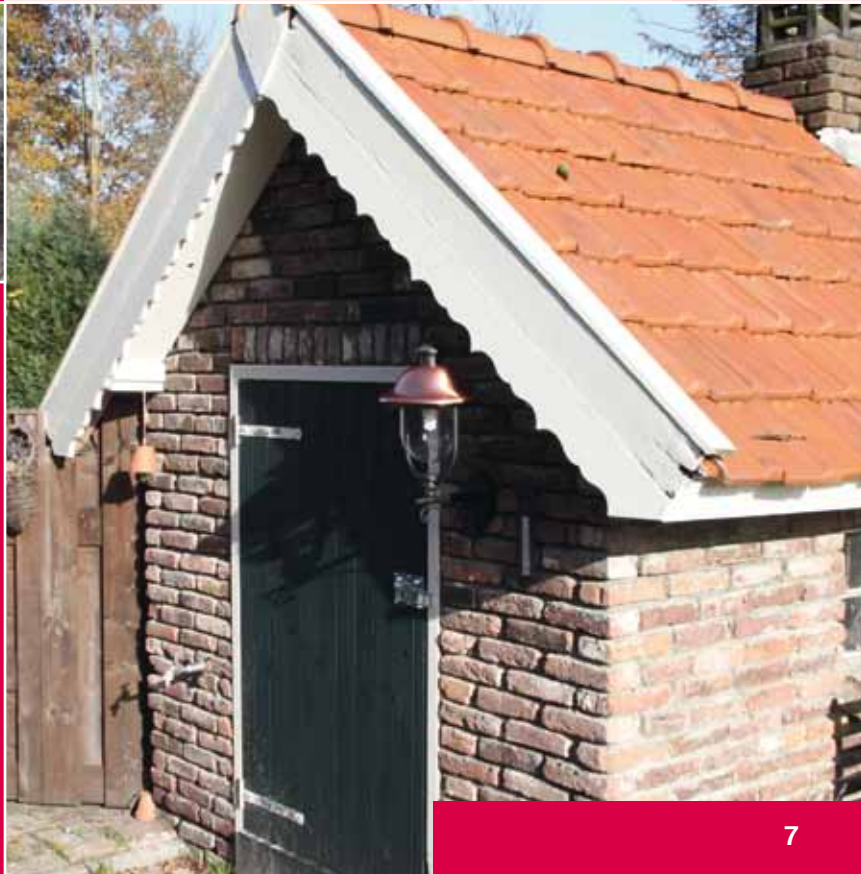


240 VOLT

240 volt range



Luxform's extensive assortment of 240 volt lighting is comprised of several different product ranges and light sources (low energy bulbs and LEDs). Both contemporary and classic styles are available in matching marker lights, lampposts and wall lights, to allow you to create an integrated look in your garden.

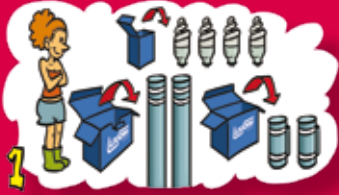




240 volt range

Should your taste be Modern, Classic or Retro, you will find your choice of style in Luxform's 240 volt range. To help save on power consumption several models feature motion sensors, which also increases security and safety in the garden.

All Luxform products are manufactured from quality materials chosen to match the style of the light. Modern Stainless Steel; classic powder coated aluminium; antique bronze and copper finishes provide a wide range of choice. All models in our Richmond and Reno ranges are fitted with glass for an optimal light output and sharp, high quality look.





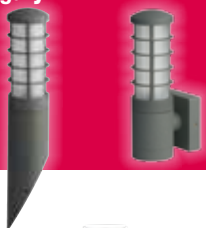
240 VOLT

Reno



240 V

Calgary



240 V

Orlando



240 V

Atlanta



240 V

Québec



240 V

Montreal



240 V

Richmond



240 V

Victoria



240 V

Milton



240 V

Neso



240 V





LED Lighting



Energy saving, it is good for your wallet.

Compared to a normal bulb an LED bulb is energy saving (normally 0.5 to 3 watts per light). By using smaller transformers with a lower wattage, they use less energy and save you money.



LED



Durable and maintenance free

With a life expectancy of thirty thousand hours you will have long lasting pleasure from your garden lights. In comparison: Halogen bulbs have an average illuminated time of 2 to 3000 hours.

Safe and easy to install

Our LED lights can easily be combined with the other Luxform low voltage lighting. They use the same cables, connecting clips and transformers as all other Luxform low voltage lights.

Suitable for creating special light effects.

LED lights are very versatile. They are particularly effective when used on decking, paths, driveways and steps and even ceilings!



Solar Lighting





Solar powered accent lighting from Luxform Lighting is the fastest, safest and easiest way to add beauty and value to your home. Designed to be ecologically friendly, our solar lights require no household current to operate but gather their energy directly from the sun.

Simply put, solar lighting is the easiest kind of outdoor lighting to install. Each light fixture contains a scientifically designed solar collector panel that converts sunlight into electrical energy.

This energy is stored in the highly efficient rechargeable batteries used to light the fixture at night.



Safe, easy 
SOLAR



Each solar light operates independently from others without the need of a transformer and wiring. This makes solar lighting especially suitable for use in remote areas and locations near water.

Solar lights utilise the latest L.E.D. technology and provide sufficient light to mark entrances, accent walkways & steps and highlight darkened areas at night.



How to light your garden



Follow the simple steps

1. Place you light in position
2. Connect clip each light to the main cable
3. Plug the main cable into the transformer
4. Switch on

It's that easy!

For more information, see our frequently asked question on Page 18.

Connecting:

Push the two cables in the bottom of the cable connector, click the upper side of the connector on the bottom and you have made the connection. It's safe because it works on only 12 volts. No need to worry about kids, pets or even adults! And you can even cover the cable with soil or any other ground cover.

Ideas for lighting you garden

Spend some time in your garden things about the effect you want to create: Use spot lights to feature statues, water features or specimen plants. Uplighters add drama to these features as the light shines upward casting deep shadows from below.

Think about how you want to light paths, borders and drives – With post lights or LED's? If you have decking – what size LED do you want to use? Is there a place where the extra light output of the ECOpower models would be particularly effective?

And unlike many other garden lighting systems all Luxform low voltage garden lights work off the same cables, connecting clips and transformers. Plus you can relocate your lights as many times as you want.

Completing your lighting plan

Once you have decided on the style and positioning of the lights for your garden, you must select your products. The low voltage range can have one of 4 logo's, based on a jigsaw, on the front of the pack. If you have a complete puzzle, you have everything you need.

Set selection Look for the logo on the box



Complete sets

These sets contain lights of the same model, a main cable, cable connectors and a transformer suitable for the number of lights included. This set cannot be extended.



Starter Kits

These sets contain lights of the same model, a main cable, cable connectors and a transformer with extra capacity onto which you can add extra lights.



Single Light

Light that can be added to a starter kit or used to create your own lighting plan.



Accessories

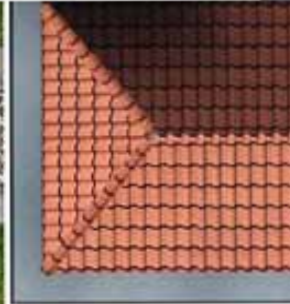
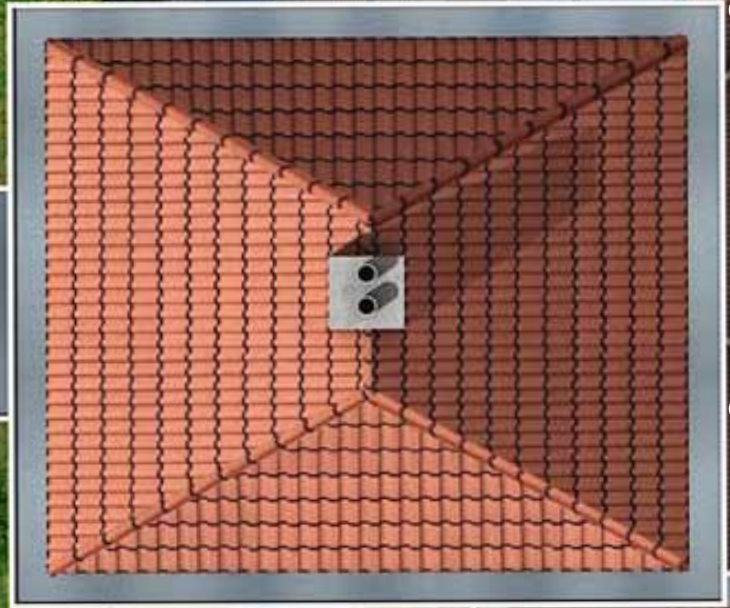
Luxform offer a wide range of accessories, such as timers, extension cables and bulbs.

See also page 16 - 17.

3X PORTO HANGING



3X MONTREAL



2X BOSTON



5X ATLAS



a complete lighted garden

● 4X SYDNEY



● 4X TICKY TORCH



● 3X MONTREAL



By adding up the wattage of each bulb, you can decide on the transformer capacity you require. (The total wattage of the bulbs must not exceed the capacity of the transformer).



Faq Low voltage

IS THE INSTALLATION OF LUXFORM GARDEN LIGHTS DIFFICULT?

The installation of Luxform garden lights is not difficult at all. Because the lights work with a transformer, they work on a reduced current of 12 volts. This makes the installation considerably easier than mains voltage. It is not necessary to install a mains cable, which would require burial at least 50cm below ground. All you require is a mains socket in a garage, shed or the garden and the installation can be done without using any tools thanks to our 'Easy Connect' system.

HOW MANY LIGHTS CAN BE CONNECTED TO A TRANSFORMER?

The total wattage of the single lights put together must not exceed the capacity of the transformer used.

CAN I PLACE THE TRANSFORMER OUTSIDE?

Most Luxform transformers labelled with the code IP44 can be placed outside. The transformer does not have to be protected against the weather. Only the plug needs to be housed in a weather proof outside socket or in the garage or shed.

DO I HAVE TO PROTECT THE CABLE CONNECTOR AGAINST THE WEATHER CONDITIONS?

Cable connectors do not have to be protected against rain or any other weather conditions. They can be placed without any problems on or under the ground. A few inches is sufficient just to conceal them.

IS IT DANGEROUS WHEN I ACCIDENTALLY CUT THE CABLE?

Cable damage can occur through digging or inquisitive animals. Because the cable works on a safe current of 12 Volts it is not dangerous. Just rejoin with a cable connector.

WHAT IS THE MAXIMUM LENGTH I CAN RUN A MAIN CABLE?

The standard cable (STP1) which Luxform delivers can be used up to 25 metres from the transformer. Luxform has a thicker cable (STP3) in its range which can be used 45 metres from the transformer. All low voltage systems will perform less when the recommended distance limits are exceeded.

WHAT CAN I DO WHEN SOME LIGHTS DO NOT ILLUMINATE?

Depending which lights are not lit:

- An incorrect connection – open the connector and reconnect. In practically all cases, this resolves the problem.
- The cable has exceeded the recommended length– this is indicated when the last lights do not illuminate or they are dim.
- The cable has been cut – usually several of the lights will not illuminate – use a connector clip to join.
- Check for a defective bulb.

Bulbs available



POWER LED

3W

- Type MR16
- Low energy use
- High light output
- 85% energy saving



LED REFLECTOR BULB

1,5W

- Low energy use
- Long Life time
- Accent lighting



HALOGEEN BULB

10 - 20W

- Type MR11 en MR16
- Bright Light output
- Functional lighting for spots



HALOGEEN BULB

5 - 10 - 20 - 50W

- Type JCG4 and JC GY6,35
- Bright Light output
- Functional lighting



GLOW BULB

5 - 7 - 10W

- Type Wedge T15
- Atmospheric light output
- Romantic Lighting



LOW-ENERGY LIGHT BULB

5W

- Light output 25W
- 80% energy saving



LOW-ENERGY LIGHT BULB

11W

- Light output 50W
- 80% energy saving

Faq Solar

HOW DO SOLAR LIGHTS STORE ENERGY AND HOW DO THEY WORK?

The lights have a built-in solar panel and charging circuit which renews the energy provided by the sun in the rechargeable batteries.

IS LOWER LIGHT OUTPUT CONSIDERED A DISADVANTAGE?

The lights are usually not as bright as low voltage lighting; however, they provide a softer, more subtle light output for accent lighting.

I LIVE IN AN AREA WITH LONG WINTER NIGHTS. DO SOLAR LIGHTS MAKE SENSE FOR ME?

Whilst the fixtures themselves are designed for use in most conditions, lighting times can be adversely affected in the winter. Because they install so easily, many people store them in the autumn and simply put them out again in the spring.

WHAT SORT OF MAINTENANCE WILL I NEED TO BE CONCERNED WITH?

Other than replacing the batteries, there is not really much that can go wrong.

HOW OFTEN DO BATTERIES NEED REPLACING?

The batteries are designed to withstand a minimum of 1,000 deep discharges which is at least 1,000 nights of light. They should not have to be replaced for at approximately 3 years.

WHAT ELSE SHOULD I KNOW ABOUT THE BATTERIES?

They are readily available and easy to replace with Luxform rechargeable batteries.

HOW OFTEN WILL I NEED TO REPLACE THE LED IN MY SOLAR FIXTURE?

The LED's themselves are not replaceable but their life expectancy would typically exceed 25 years based on running 6-8 hours every night.





UK OFFICE:
Luxform Global BV
1 Arden Buildings
Station Road
Dorridge
Solihull B93 8HH
Tel: 01564 775532
www.luxformglobal.com

